



Verladetechnik Industrietore

Ronnenberger Straße 20  
30989 Gehrden  
phone +49 (0) 5108 879 270  
www.promstahl.de

## Product datasheet

PROMStahl wheel chocks  
(PZK/ PZKE)

Version: 1.3.0

Date: 06.02.2023



## Product datasheet

### Safety wheel chock

Type: PZK sensor-controlled safety wheel chock  
PZKE economy wheel chocks

#### Contact:



Ronnenberger Straße 20  
D-30989 Gehrden

phone +49 (0) 5108 879 270  
fax +49 (0) 5108 879 2710

info@promstahl.de  
www.promstahl.de

# Wheel chock Economy (PZKE)

PROMStahl's Economy wheel chock is best suited to prevent big utility vehicles, lorries and trailers from accidentally rolling away from the docking station. It is extremely robust and much more stable than a metal wheel chock. Handling of this type of wheel chock is very easy thanks to the integrated handle. To fasten it to the docking station, we recommend to combine the wheel chock with the galvanized support device and a 5-meter knotted-link chain.

## Technical specification

- made of high-quality modern polypropylene plastic material
- colour: yellow (safety colour)
- dimensions L x H x W: 470 mm x 230 mm x 200 mm
- weight : about 1.6 kg
- suitable for tire diameters up to 1320 mm
- suggests itself thanks to its low price and its long service life



Wheel chock



Standard support device with knotted-link chain

The wheel chock meets the requirements of the DIN 76051 standard and is TÜV- tested.

## Rubber wheel chock (PZKE)

The PROMStahl Economy wheel chock consists of vulcanized new rubber material and has an excellent slip resistance thanks to its special bottom structure. It stands out for its long service life, its extreme robustness, elasticity and shock absorbing features. It is equipped with a handle for easy use. To fix this wheel chock to the docking station we recommend to equip it with a galvanized support and the knot chain.



### Technical specification

- Nominal size: 46
- dimensions L x H x B: 380 mm x 190 mm x 160 mm
- weight : about 6 kg
- with integrated handle for easy use
- galvanized support and 5m knot chain (available as an option)

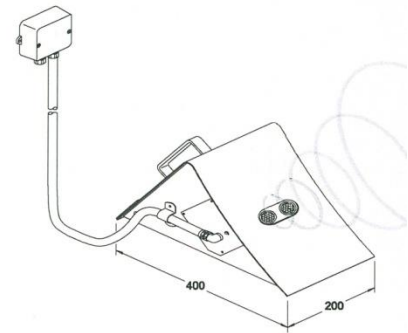
## Sensor-controlled safety wheel chock (PZK)



The PZK wheel chock equipped with a position-dependent ultrasonic sensor and connected to the control unit via a robust cable guarantees safety during the whole loading and unloading process. As soon as one of the rear wheels of the lorry is blocked by means of the wheel chock, the leveller control function is “released” so that operation of the dock leveller can be started.

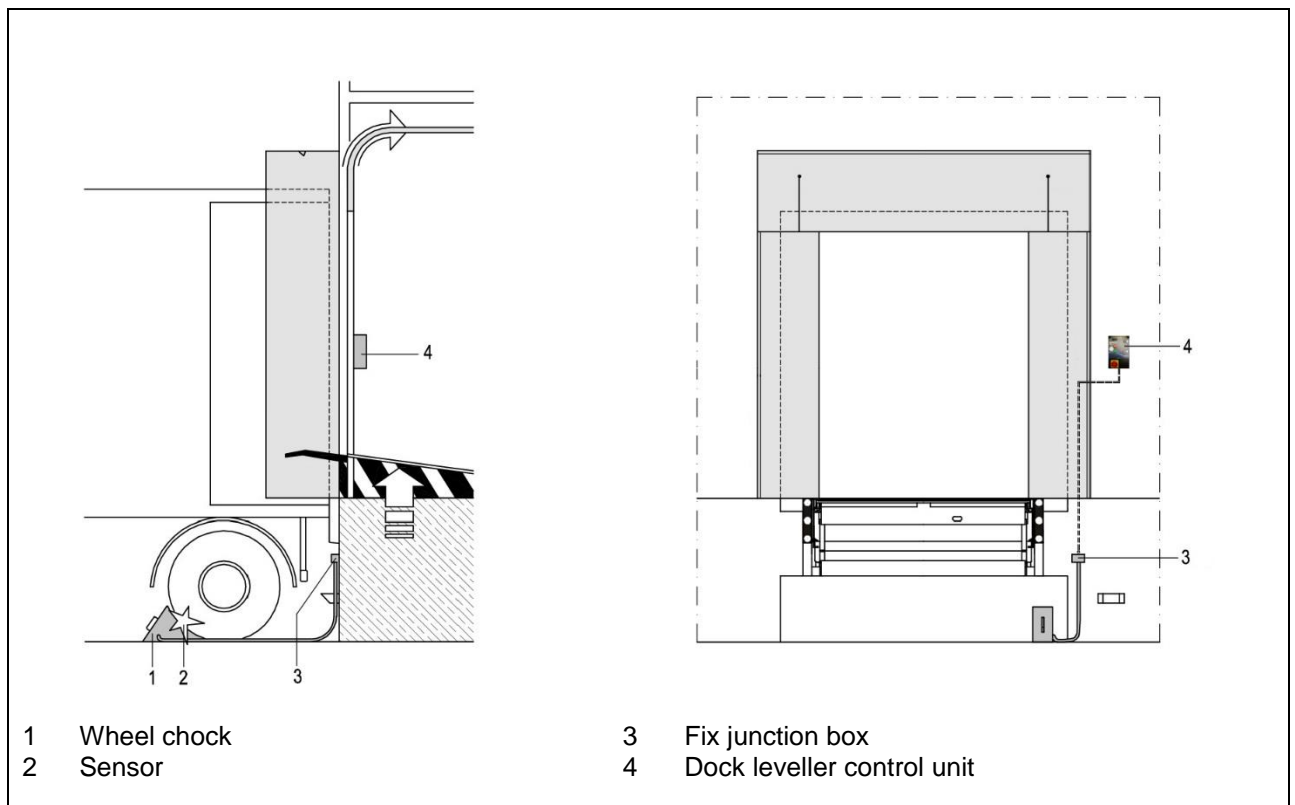
## Technical specification

- made of hot-dip galvanised steel sheet material
- dimensions (length x height x width): 400 mm x 240 mm x 200 mm
- weight: 12 kg
- potential-free contact
- including ultrasonic sensor and wall fixing device
- including 8 m spiral cable
- measuring range: 0 -120 mm



### Sequence of operation:

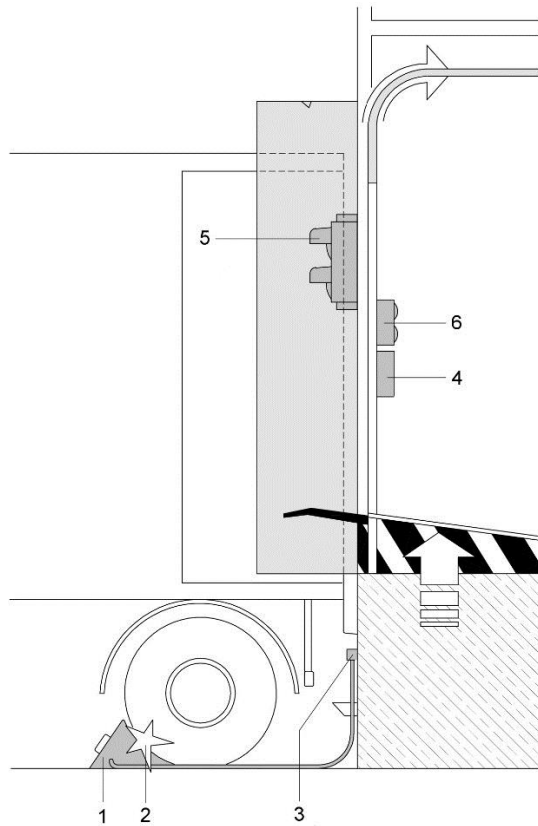
- The dock leveller can only be operated if the lorry is blocked by means of the safety wheel chock.
- With the wheel chock being positioned, the lorry cannot accidentally roll away from the docking station.



## Wheel chock with internal / external traffic lights

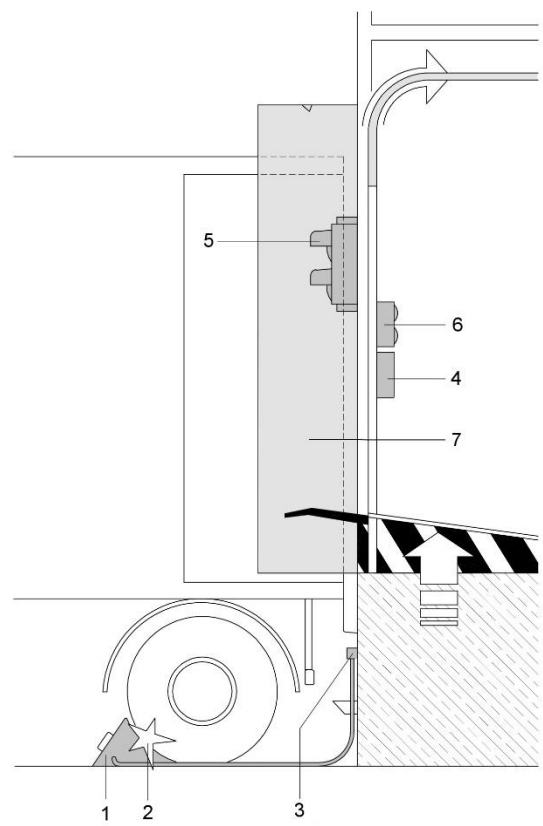
The transition area between a dock leveller and the lorry bed has turned out to be very dangerous. Many serious accidents have already happened. Such accidents can be prevented by combining a wheel chock with a traffic lights system.

**Sensor-controlled safety wheel chock with traffic lights**



- 1 Wheel chock
- 2 Sensors
- 3 Junction box
- 4 Dock leveller control box
- 5 External traffic lights
- 6 Internal traffic lights

**Sensor-controlled safety wheel chock with traffic lights and vehicle detection system**



- 1 Wheel chock
- 2 Sensors
- 3 Junction box
- 4 Dock leveller control box
- 5 External traffic lights
- 6 Internal traffic lights
- 7 Vehicle detection system

## Functional description

Docking station status	Traffic lights signals int.    ext.		Sensor-control safety wheel chock	
			Traffic lights	Traffic lights and vehicle detection system
<ul style="list-style-type: none"> <li>Dock leveller is in cross-traffic position</li> <li>Door is closed</li> </ul>	red	green	+	+
<ul style="list-style-type: none"> <li>Lorry dock-in</li> </ul>	red	green	+	-
<ul style="list-style-type: none"> <li>Lorry dock-in, vehicle detection system identifies truck</li> </ul>	red	red	-	+
<ul style="list-style-type: none"> <li>Lorry is blocked by means of a wheel chock</li> </ul>	red	red	+	+
<ul style="list-style-type: none"> <li>Door is opened</li> <li>Control unit unblocks dock leveller</li> <li>Dock leveller positioning: lip comes to rest on lorry bed</li> <li>Dock leveller is in floating position</li> <li>Loading / unloading can be started</li> </ul>	green	red	+	+
<ul style="list-style-type: none"> <li>Pressing the „R“ button makes the dock leveller return to rest position</li> </ul>	red	red	+	+
<ul style="list-style-type: none"> <li>Complete loading / unloading</li> <li>Wheel chock is removed</li> <li>Lorry leaves docking station</li> </ul>	red	green	+	+

+ applicable, - not applicable

## Electrical connection of PROMStahl traffic lights system with wheel chock

