



PROMSTAHL

Verladetechnik

Industrietore

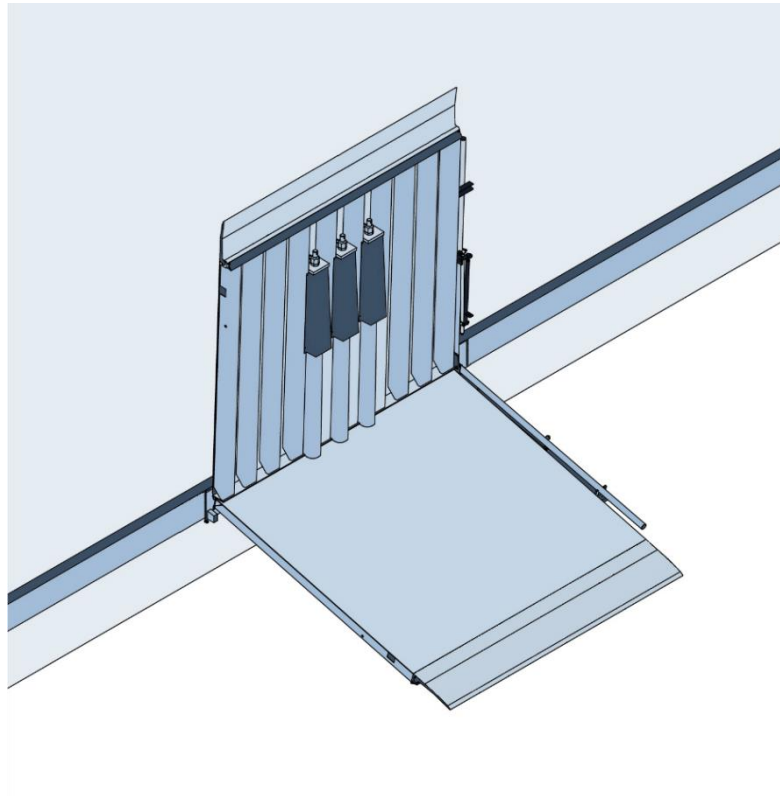
Ronnenberger Straße 20
30989 Gehrden
phone +49 (0) 5108 879 270
www.promstahl.de

Product datasheet

Stationary drawbridge leveller
Type PPF

Version: 1.2.0

Date: 06.02.2023



Product datasheet

Stationary drawbridge leveller

Type: PPF

Load capacity: 60 kN

Contact:



PROMSTAHL

Ronnenberger Straße 20
D-30989 Gehrden

phone +49 (0) 5108 879 270
fax +49 (0) 5108 879 2710

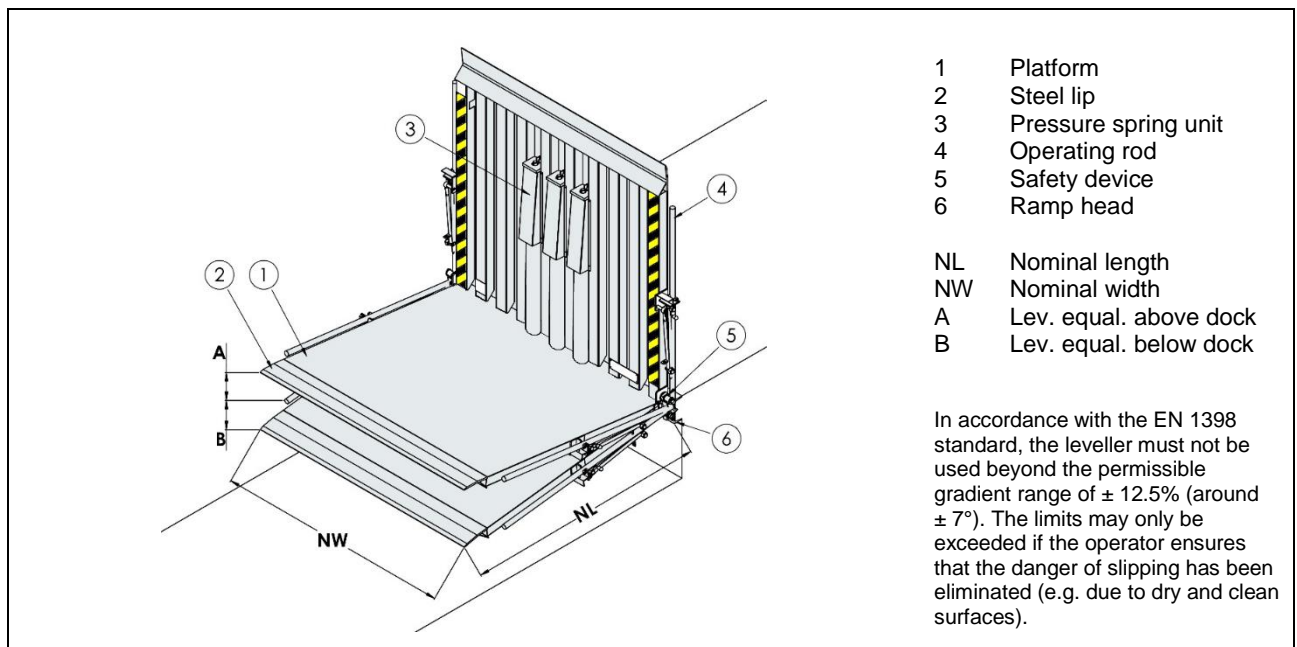
info@promstahl.de
www.promstahl.de

Stationary drawbridge leveller

The PPF stationary drawbridge leveller is a new product of PROMStahl's wide product range. It is suited for internal as well as for external docks and is used if small or medium differences in height between the dock edge and the lorry bed are to be compensated for. The drawbridge leveller is fixed to the ramp head by means of a steel hinge; for the loading or unloading process it is lowered onto the lorry bed by means of an operating rod. The leveller's weight is compensated for by means of pressure springs so that the PPF can be operated without any problems by one person only. For a nominal width and a nominal length of 2000 mm the drawbridge leveller is always equipped with 2 operating rods to allow operation by two persons.

When not in use the leveller is fixed in vertical position at the ramp edge and locked in this position by means of an automatic safety device. All steel parts of the PPF leveller are available hot-dip galvanized.

The PROMStahl drawbridge leveller meets the requirements of the most recent European standard EN 1398.



NL	NW	A	B
1250	1500, 1750, 2000	175	245
1500	1500, 1750, 2000	225	295
1750	1500, 1750, 2000	265	340
2000	1500, 1750, 2000	310	390

Load capacity for all sizes 60 kN
All dimensions in mm.

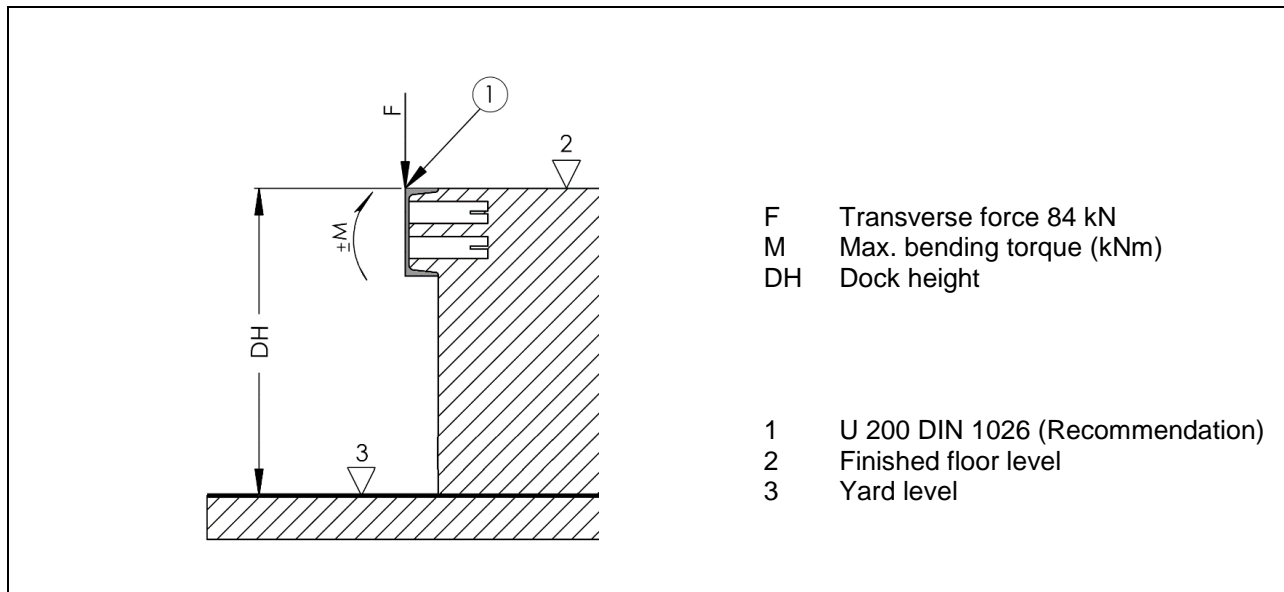
Standard

Steel lip	Angled steel lip length 230 mm Chamfered section: 30 mm Tear-plate thickness: 13 mm/15 mm
Platform	Tear-plate thickness: 4 mm/6 mm
Surface	Hot-dip galvanisation
Others	Delivered with one operating rod NL/NW < 2000 mm NL 2000 mm/ NW 2000 mm (delivered with two operating rods)

Options

Steel lip	Steel lip with tapered edges (125 mm on both sides)
Surface	Duplex coating
Others	Additional operating rod for NL/NW < 2000 mm

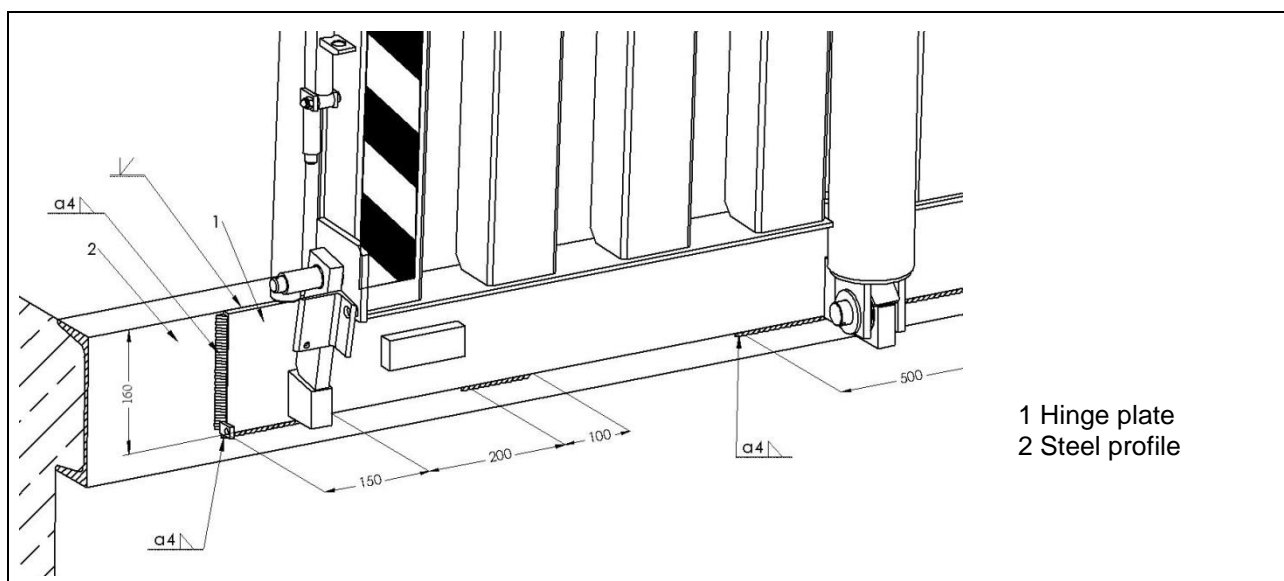
Preparations by the customer



NL	Max. bending torque M at the ramp front edge in kNm		
	NW 1500	NW 1750	NW 2000
1250	5,4	6,3	7,5
1500	8,3	9	10,1
1750	11,4	12,3	13,6
2000	14	16	17

All dimensions in mm.

Fixing of the drawbridge leveller



All dimensions in mm.