



Verladetechnik Industrietore

Ronnenberger Straße 20
30989 Gehrden
phone +49 (0) 5108 879 270
www.promstahl.de

Product datasheet

Laterally sliding drawbridge leveller
Type PKBS

Version: 1.2.0

Date: 15.02.2023



Product datasheet

Laterally sliding drawbridge leveller

Type: PKBS

Load capacity: 40 kN

Contact:



Ronnenberger Straße 20
D-30989 Gehrden

phone +49 (0) 5108 879 270
fax +49 (0) 5108 879 2710

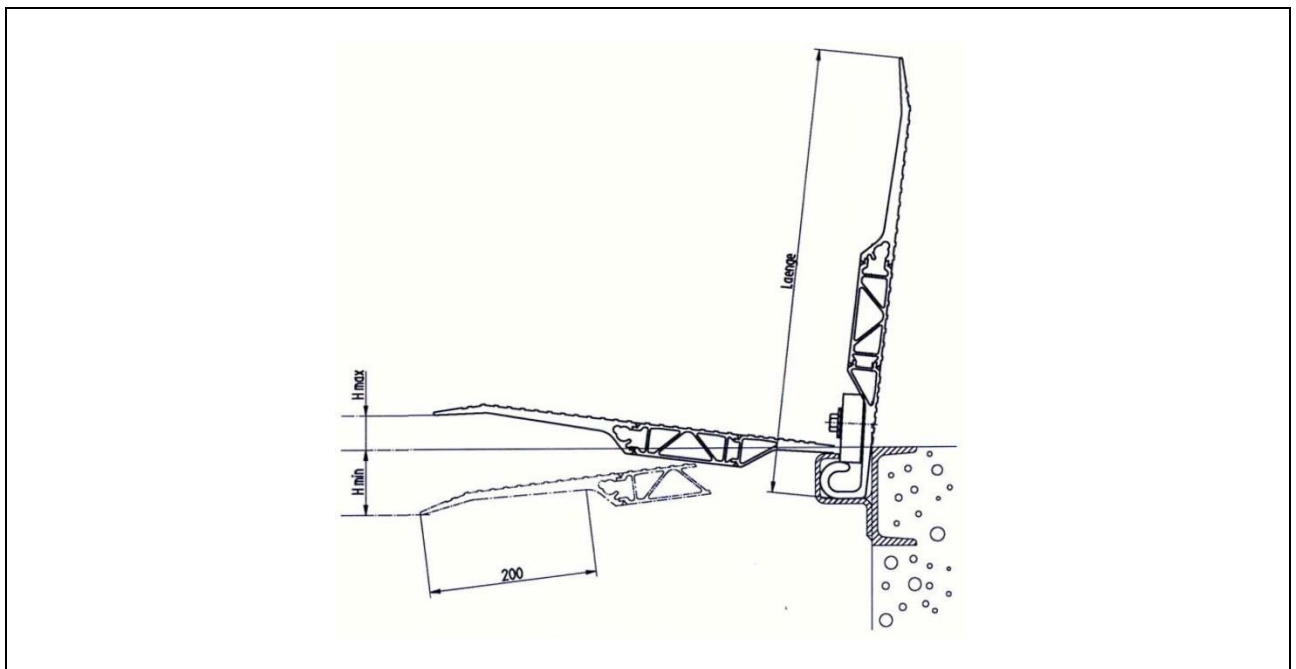
info@promstahl.de
www.promstahl.de

General information

The PKBS laterally sliding drawbridge leveller manufactured by PROMStahl is designed for bridging loading areas with small or medium differences in height and may be operated by one person. This leveller slides laterally and is stored vertically at the edge of the dock when not in use; its load capacity is 40 kN; the maximum difference in height that can be compensated for amounts to 135 mm.

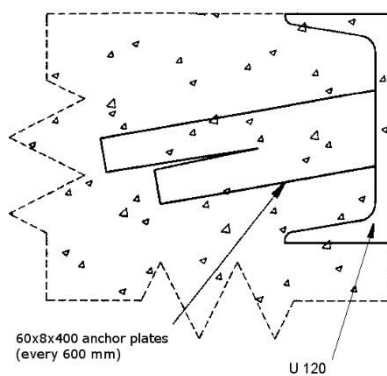
This type of drawbridge leveller is made of durable weatherproof aluminium alloy and meets the highest requirements of modern goods traffic. The automatic lock/release system prevents accidental fall-down of the device.

Overview



Nominal length	Nominal width	Height difference	
		min.	max.
410	1250, 1500	-70	+30
535	1250, 1500	-90	+45
785	1250, 1500	-120	+75
910	1250, 1500	-135	+90
All dimensions in mm			

Preparations by the customer (recommended)



Fixing of the guide rail

