



Verladetechnik Industrietore

Ronnenberger Straße 20  
30989 Gehrden  
phone +49 (0) 5108 879 270  
www.promstahl.de

## Productdatasheet

Industrial rolling doors  
(PDR A/ PDR S)

Version: 1.2.0

Date: 16.02.2023



## Productdatasheet

Industrial rolling doors

Type: PDR A/ PDR S

### Contact:



Ronnenberger Straße 20  
D-30989 Gehrden

phone +49 (0) 5108 879 270  
fax +49 (0) 5108 879 2710

info@promstahl.de  
www.promstahl.de

# Contents

General information .....	3
PDR A.....	3
PDR S.....	3
PDR A high-speed door ISO-SL.....	4
PDR S high-speed door SL.....	4
Roller door profiles .....	4
The tough ones.....	4
Drive.....	6
Door control .....	6
High-speed rolling door .....	6
Pulse generators.....	6
Safety .....	6
Accessories .....	6

## General information

The industrial rolling door can be precisely and consistently customised for a wide range of users. When the time comes to invest in new doors, especially where space is tight and access is difficult, rolling doors are an excellent choice.

Continuously galvanized, extra-strong steel can be used for stability and safety. For low weight and corrosion resistance, aluminium is a good choice.

The industrial rolling doors are available in the following dimensions:

height: 1500mm – 10000mm  
width: max. 11800mm

A lot of advantages of the industrial rolling doors speak for themselves:

- excellence the heat and sound insulating properties
- extremely robust, durable and high-grade manufacture
- using a range of different roller door profile for better vision and ventilation
- RAL colours, using a range of coil coating or wet paint systems
- high motor speeds with inverter technology

The PDR industrial rolling door fully comply with the requirements of EN 13241-1 and hold a TÜV-approval.

### PDR A

Roller door profile, aluminium

Variants

- Double wall insulated PU-filled profile, material aluminium
- Single wall roller door profile, material aluminium

Aluminium offers improved corrosion-resistance compared to steel, and is even more lightweight, around 4.9 kg/m<sup>2</sup>.

### PDR S

Roller door profile, galvanized steel

Variants

- Double wall insulated PU-filled profile, material galvanized steel
- Single wall roller door profile, material galvanized steel

The rolling doors have a high stability yet lightweight- about 10 kg/m<sup>2</sup>, economical to maintain and extremely easy repair.

## PDR A high-speed door ISO-SL

- Double wall insulated PU-filled profile, material aluminium
- GfA direct mount drive with digital top switch and integrated frequency converter
- max. opening speed of up to ca. 1,7 m/s (dependent on the rolling doors dimensions)
- average opening speed of up to 0,7 m/s (dependent on the rolling doors dimensions)
- Closing speed approx. 0,3 m/s
- greatly reduced running noise and outstanding heat insulation.
- available in dimensions height 1500mm – 6000mm

## PDR S high-speed door SL

- Double wall insulated PU-filled profile, material galvanized steel
- GfA direct mount drive with digital top switch and integrated frequency converter
- Quiet running noise and outstanding heat insulation
- available in dimensions height 1500mm - 5500mm

## Roller door profiles

### The tough ones

#### Single-walled roller door profiles

Our single-walled roller door profiles are available in galvanised steel, aluminium and stainless steel, colour coated upon request. They prove to be extremely robust and resistant to bending in every day use. The selection includes curved and straight profiles in different materials and surfaces.

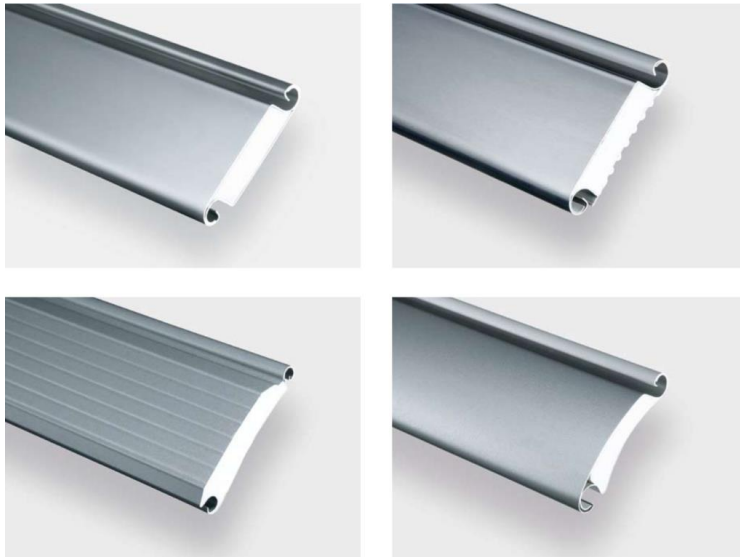


### The convenient ones

#### Double walled roller door profiles

We recommend our double-walled roller door profiles where requirements for smooth operation and insulating properties are higher.

Depending upon model, they are provided with polystyrene foam, mineral wool or filled with polyurethane foam in a modern production process and satisfy the highest demands for stability, resistance and safety. They are also available in different materials and colour coatings.



### **Good visibility, maximum security.**

Most of the profiles in our product range are available in versions as perforated or window profiles or with grid cut-outs. In addition to better vision and ventilation, they also provide a visual lightening of the roller shutter. Existing roller door installations can be retrofitted accordingly or partially upgraded.



perforated profile



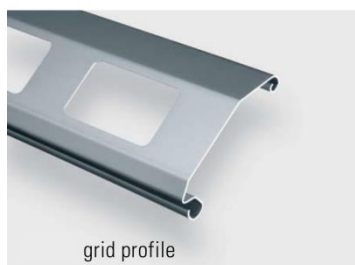
perforated profile



window profile



window profile



grid profile



ventilation grid

## Drive

The drive is a slip-on geared motor with integrated safety catch. It is sized according to the dimensions of the door system. The drive can be installed on the right or the left.

### Door control

The industrial rolling door has a basic control system configured to press-and-hold to close/ press once to open. The plastic control box has a film keypad with Open-Stop-Close buttons. A CEE-plug (IP 54) is used to connect the power supply. Other door control configurations can be selected.

### High-speed rolling door

A powerful microprocessor with inverter is available, providing smooth acceleration and soft braking to protect the materials as the door opens and closes. This allows the opening speed to be increased to 0.6 m/s. A stationary light barrier also prevents the door closing if there are people or objects in the way.

### Pulse generators

Individual functionality can be further customized with additional safety devices like infrared or radar motion sensors and a wide range of industrial pulse generators (switches, induction loops, radio transmitters).

### Safety

Each door can be fitted with an electrically monitored bottom section (safety contact strip or advancing safety light barrier). If the door is less than 2,500 mm in height, an additional safety light barrier or a containment box will be necessary (option).

## Accessories

- Key switch
- ceiling -pull-switch
- Hand-held transmitter
- wireless optical safety edge package (battery included)
- photo-beam
- push button up-down-stop
- key switch assembling kit for panel lid
- hand crank with knuckle joint
- emergency chain
- Traffic lights